

Rifle HK 416 (Airsoft)

香港肆壹陸套件(玩具)



**Disassembly and assembly of the
HAO's HK 416 kit for KWA/KSC system**

安裝使用說明書



Rifle HK 416 (Airsoft)

香港肆壹陸套件(玩具)

DANGER

Risk of death from gunshot wounds!
Accidental discharge of weapon may occur when loaded weapon is handled.

- >Carry out a safety check before working on the weapon.
- >Do not perform maintenance work until you have read and understood this manual and the operator's manual for the weapon described here completely.
- >Follow the safety instructions when handling the weapon.

危 險

槍擊至傷可能有生命危險!

持有上膛武器操作導致意外可能!

- >操作組裝前需全面武器安全檢查。
- >在完全詳細閱讀此說明書前請勿操作閣下的武器。
- >請遵照說明書上的安全使用規則。





Table of contents

Prologue List of Parts 零件總覽.....	6
Part I Assembly of Lower Receiver 下機英組裝.....	8
1. Install Little cube 安裝小方塊.....	9
2. Install the trigger and hammer assembly 安裝板機和擊錘總成.....	10
3. Install the selector assembly 安裝射擊選擇鈕.....	11
4. Install the bolt and the magazine catch 安裝槍機卡榫和彈夾卡榫鈕.....	12
5. Install the pivot-pin and takedown pins 安裝前後槍身固定插梢.....	13
6. Install the buffer retainer and extension 安裝覆進卡榫和槍托托桿.....	14
7. Install the grip & trigger guard 安裝握把及板機護弓.....	15
Part II Assembly of Upper Receiver 上機英組裝.....	17
1. Install the chamber set 安裝藥室.....	17
2. Install outer barrel gas block & barrel nut 安裝外管瓦斯座和星狀環.....	18
3. Install the muzzle brake and dust cover 安裝防火帽及防塵蓋.....	19
4. Install the bolt carrier group 安裝槍機總成.....	20
5. Install the assist knob 安裝槍機助進器.....	21

 **WARNING**

All HAO kits are all precisely machined for KWA/KSC GBBR specification.

We do not recommend our user to use aftermarket parts on HAO's kit.

 **警告**

香港肆壹陸改裝套件都是由 CNC 機密機床所加工完成，

所有規格都是準確地針對 KWA/KSC GBBR 系統

我們並不建議閣下使用第三方改裝零件裝置 HAO 套件上。

 **BEST COMPATIBLE WITH**



Prologue:

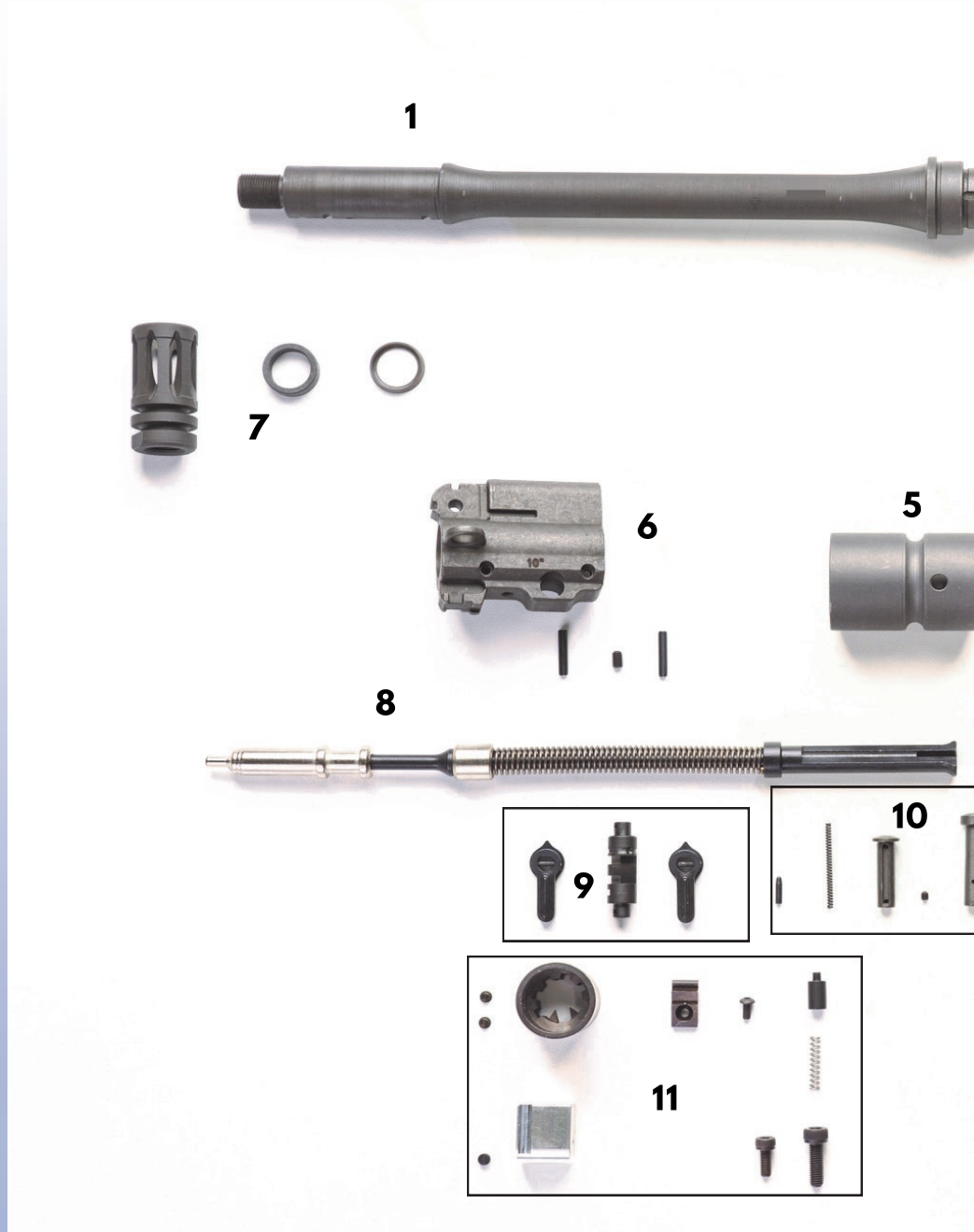
List of Parts

零件總覽

請閣下仔細檢查套件盒內零件，若缺少零件請聯絡您的經銷商



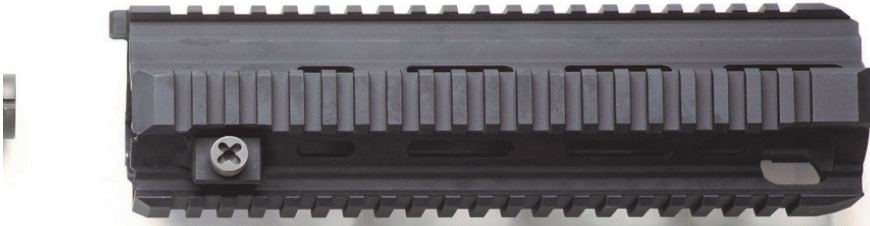
Assembly of Upper Receiver





Assembly of Upper Receiver

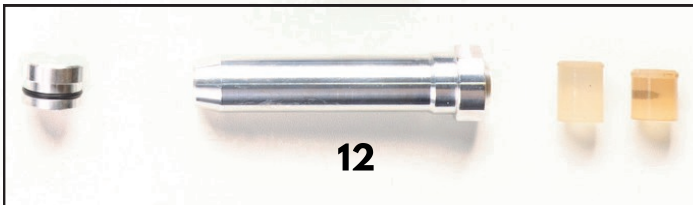
2



3



4



12

Part I

Assembly of Lower Receiver

All KWA/KSC lower part are extremely not compatible with RS. But the takedown pin Slot on HAO's kit are compatible with RS.

步驟一: 下機莖組裝

KWA/KSC 精美的設計讓所有尺寸都與真槍不相同....

但你知道嗎? 我們至少將前後固定插梢改為可以和真品通用



Assembly of Upper Receiver 下機英組裝

Assembly of Lower Receiver:
HAO's HK416 kit is precisely machined by CNC Machine center from A7075-T6 alloy billet Which is the same material with Real Steel.

組裝下機英:

香港肆壹陸 套件是從與真鐵相同的鋁合金 A7075-T6 錠塊經由高精度 CNC 加工中心所加工完成。

1. Install Little cube

First, make sure your little cube is secure sit on the right position. Second, insert the cube vertically on the top of the trigger slot then slide horizontally into the position and tight them up with hex .

1. 安裝小方塊

首先請閣下確認方塊位置的方向正確無誤後，將孔位向後位置垂直地先將方塊裝置板機孔位置上，再將方塊水平向後推移至卡槽位置，並再由下方以六角螺絲固定。





Assembly of Lower Receiver 下機英組裝

2. Install the trigger and hammer assembly. First insert the trigger assembly into the trigger slot. Second, insert the hammer assembly, make sure everything secure and fasten. Third, the plate. Finally the pivot pin for the selector.

Tip
Hold the pivot pin with tweezers will improve the installation time.



2. 安裝板機和擊錘總成:

首先先將板機總成放進板機槽，接著再放入擊錘總成，請確認所有組件都固定好後再放入飾板，最後再放入射選鈕固定插梢。

小撇步:
安裝射選鈕固定插梢時使用鑷子工具，可事半功倍。





Assembly of Lower Receiver 下機英組裝

3. Install the selector assembly
First, insert the safety lever from the left and make sure the pivot pin is in the position. Second, install the connector with C-ring and pins.

3. 安裝射擊選擇鈕:

首先先將射擊選擇手把由左至右插入插槽內，並確認固定梢正確的卡住涉及選擇手把內。再將槍機作動裝置裝入，並用插梢和 C 型固定環固定牢妥。





Assembly of Lower Receiver 下機英組裝

4. Install the bolt and magazine catch
First, insert the bolt catch assembly into the slot. Second, insert the bolt catch. Third, insert the magazine-catch shaft from the right side. Then, screw magazine-catch button into the receiver until the magazine-catch sticks out from the left.



4. 安裝槍機和彈夾卡榫釋放鈕:

首先先安裝槍機卡榫總成到正確位置，再將槍機卡榫卡上。再來將彈夾卡榫從左至右插入，並從另外一邊將彈夾釋放鈕鎖上至卡榫可以準去地抓住彈夾不至滑落。





Assembly of Lower Receiver 下機英組裝

5. Install the Pivot-Pin and takedown pins
Insert Pivot-Pin spring and then the Pivot-pin Stopper into the corresponding hole from the front of the receiver. While holding both Parts inside the hole, insert the Pivot-Pin through the lower receiver as shown.

Note

KWA/KSC's original takedown pins will not fit in HAOs HK416 kit due to KWA/KSC are using Airsoft spec instead of Real Steel one. Please use our takedown pins or purchase others for Real steel.

5.安裝前後槍身固定插梢:

首先先將槍身固定插梢插入，再將小插梢和彈簧依序放入後孔位後用六角螺絲鎖緊。再依序先放入彈簧、小插梢，後將前插梢插入固定。

注意

KWA/KSC 原廠的前後固定插梢是無法裝進 香港肆壹陸 套件的，因為原廠使用的是玩具規格而不是真鐵規格，請使用我們附贈的前後插梢，或者選購閣下喜歡的真鐵插





Assembly of Lower Receiver 下機英組裝

6. Install the buffer retainer and extension. First, install the retainer and retainer spring inside the slot on the receiver, then hold it. Second, drive the extension just above the retainer to catch it. Third, install the buffer spring and buffer assembly inside

Note

Due to the difference length of two version of BCG(Bolt Carrier Group). The A version(2013-2014) user please use the *Buffer-A* (Shorter with black dot). And B version (2015-) user please use *Buffer-B* (Longer one)

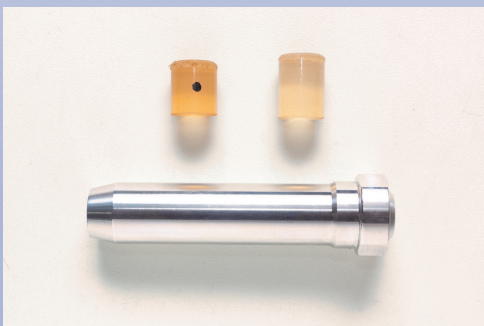


6. 安裝覆進卡桿和槍托托桿

首先先安裝覆進卡桿及彈簧到該圖位置，並用手預先壓住，再將托桿順時鐘鎖入致剛好可卡住，再將覆進簧和覆進桿依序塞入。

注意:

因兩種版本的槍機長度不同，使用 A 版本(2013-2014)的玩家請使用較短的覆進桿-A(黑點)。而使用 B 版本(2015-)的玩家請使用較長的覆進桿-B。





Assembly of Lower Receiver 下機英組裝

7. Install the grip and trigger guard.
First put the grip into the set and drive tight with hex. Second secure the trigger guard with spring pin rear first then tighten pivot knob in the front

Note

We recommend our HAO's V7 grip for KWA/KSC HK416D conversion kit.



6. 安裝握把及板機護弓

首先先將握把卡入正確位置，再用六角板手將握把鎖緊。
板機護弓先依圖彈簧梢固定後再將卡入即可。

工商服務:

我們推薦使用郝式牌 V7 握把在 香港肆壹陸套件上



Part II

Assembly of Upper Receiver

All KWA/KSC upper part are extremely not compatible with RS. But in HAO's HK416 kit you are allow to install Real Steel handguard and it's barrel nut without any modification.

步驟一: 上機莖組裝

KWA/KSC 精美的設計讓所有尺寸都與真槍不相同....

但你知道嗎? 我們至少將上槍身的的軌道高度、魚骨尺寸、星狀環和真品通用



Assembly of Upper Receiver 上機英組裝

Assembly of Upper Receiver:
Upper receiver assembly includes the barrel,
Which is the key to controls accuracy. Pre-
pare your tools such like a vice (or prefera-
bly the upper receiver clamp).

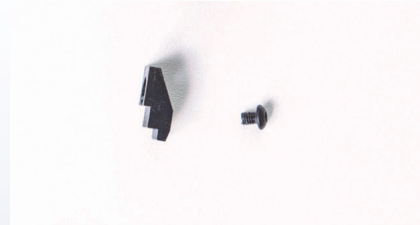
組裝上機英:

上機英的組裝包含了槍管，而槍管是精準射擊的關鍵，因此請準備好齊全的工具。(帶有橡膠固定裝置的虎鉗)

1. Install the chamber set and chamber
First, install the ladder like set on the upper
position near the position with hex screw
driver. Second, insert two pins on the cham-
ber make sure they are secure and tighten.
Finally, insert the chamber assembly direct
to the upper receiver.

1. 安裝藥室和藥室總成:

首先先將階梯狀的藥室座由六角螺絲從下往上鎖再靠近瓦
斯導管的位置。再將兩個小插梢裝入藥室總成並組裝好，
請確認固定位置的插梢牢固，再水平第插入上槍身(如
圖)。





Assembly of Upper Receiver 上機英組裝

2. Install the outer barrel, gasblock and barrel nut:

Make sure the chamber is like the picture shown, then insert the barrel with hex screw on both side slightly into the barrel slot. Then drive barrel nut clock wise to tighten up the barrel. Finally install the gasblock; spring pin first then hex screw later, make sure the gas tube is parallel with upper receiver.



WARNING

HAO's HK416 upper thread is end with Real Steel metric which is not compatible with stock KWA/KSC's M4 barrel nut. Use the correct barrel nut which is for Real Steel HK416. Wrong tread driving may damage the upper thread.

2. 安裝外管、瓦斯座和星狀環:

首先先確認藥室的位置如右圖，然後將外管兩側裝上六角螺絲再小心的插入槍管室，並在以順時鐘方向將星狀環鎖緊。最後安裝瓦斯座，請先以彈簧梢固定先再用六角螺絲固定。請確認瓦斯導管、瓦斯座是和槍身保持水平。



注 意

香港肆壹陸套件的上機英牙為真槍牙，原廠 KWA/KSC 的星狀環無法使用，請選用給真品 HK416 使用之公制星狀環，使用錯誤牙規會造成無法修復的槍身損壞！





Assembly of Upper Receiver 上機英組裝

3. Install the muzzle brake and dust cover:
First put the muzzle brake's nut on the barrel and use wrench to tighten the muzzle brake clock wise. Dust cover: First, set E-Clip groove over the shaft, Second set the spring and dust cover on the shaft from front end. Finally, insert the assembly through.



WARNING

HAO's HK416 full compensate cage muzzle brake and 10.4" gundrilled steel barrel are end with 1/2-28RH inch which is fully compatible with Real steel muzzle brake. Wrong thread driving may damage the barrel!

3.安裝防火帽和防塵蓋:

首先先將火帽環先套上外管上再將防火帽以板手順時鐘轉鎖緊。防塵蓋:先將 E 環扣預先扣上固定梢上,再固定防塵蓋和彈簧在上身上,再整組穿過固定即完成安裝。

注 意

香港肆壹陸套件所附的全開鳥籠火帽及 10.4" 槍鑽鋼管都是以真品英制牙規 1/2-28RH 規格下去製作,請使用我們提供之火帽或選購真品規格之火帽,錯誤牙規可能造成槍管永久性毀損!





Assembly of Upper Receiver 上機英組裝

4. Install the bolt carrier group:
For A version user you can directly insert the BCG inside the upper. For B version (2015-) user you have to install the extension on the back of the BCG in order to meet the correct position.



4. 安裝槍機總成:

使用舊版槍機(A)的玩家，閣下可以直接裝入您的槍機總成。而新版槍機(B)的玩家，您必須再把您的槍機後塞入香港肆陸陸套件所附贈的尾塞來延長槍機總長。





Assembly of Upper Receiver 上機英組裝

4. Install the assist knob:

For A version user you can directly insert the BCG inside the upper. For B version (2015-) user you have to install the extension on the back of the BCG in order to meet the correct position.



4. 安裝槍機助進器:

首先先將助進器連同彈簧預先組裝好，並施力塞入孔內，並先用手固定住，再以軟槌敲入彈簧梢固定

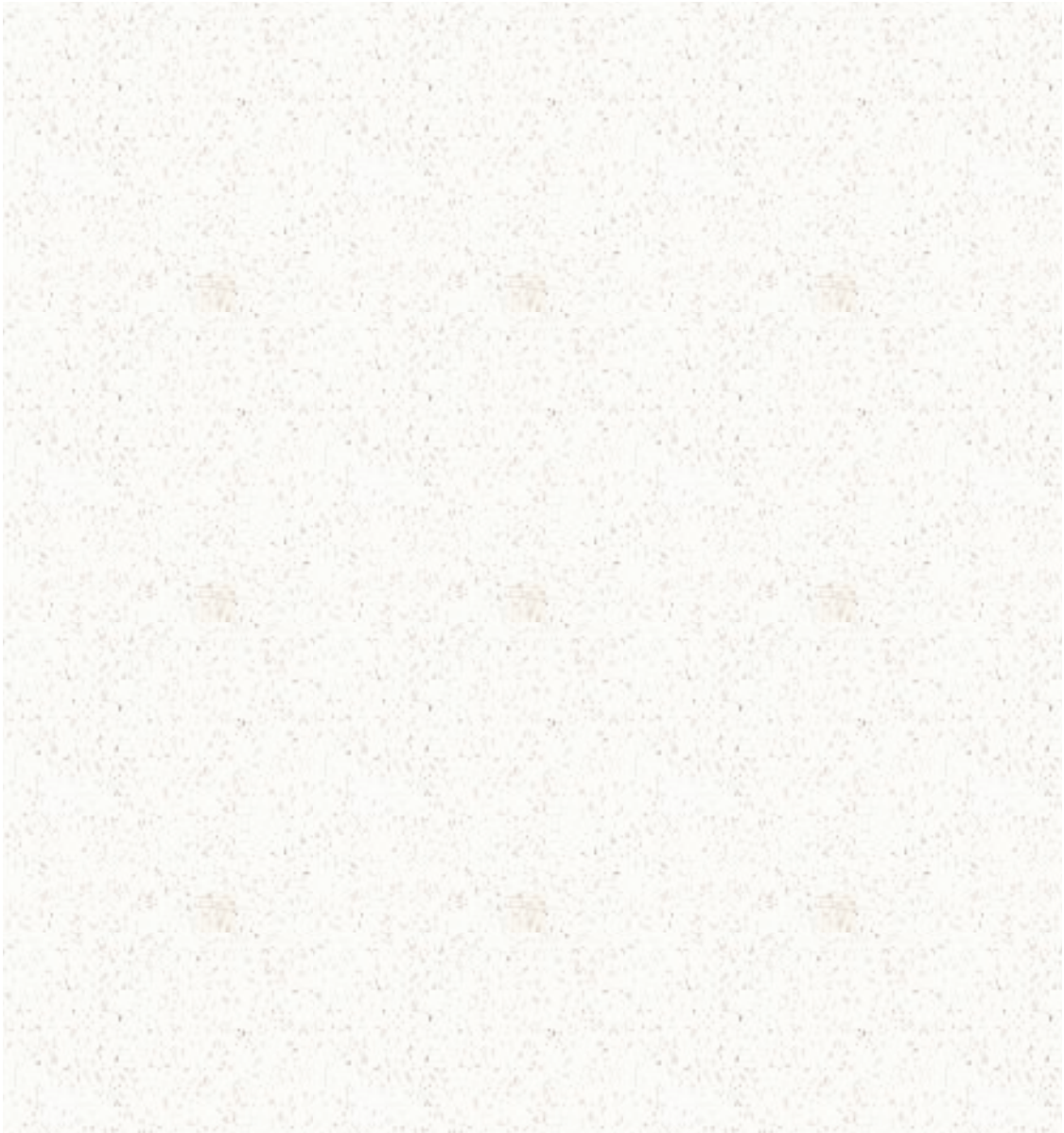




Memo



Memo



No Compromise

Quality . Innovation . Service . Safety

©Copyright 07/2017
Subject to change
Printed in Republic of China (Taiwan)



Ident.-No. 976123
Version 001.0923
OD 0515